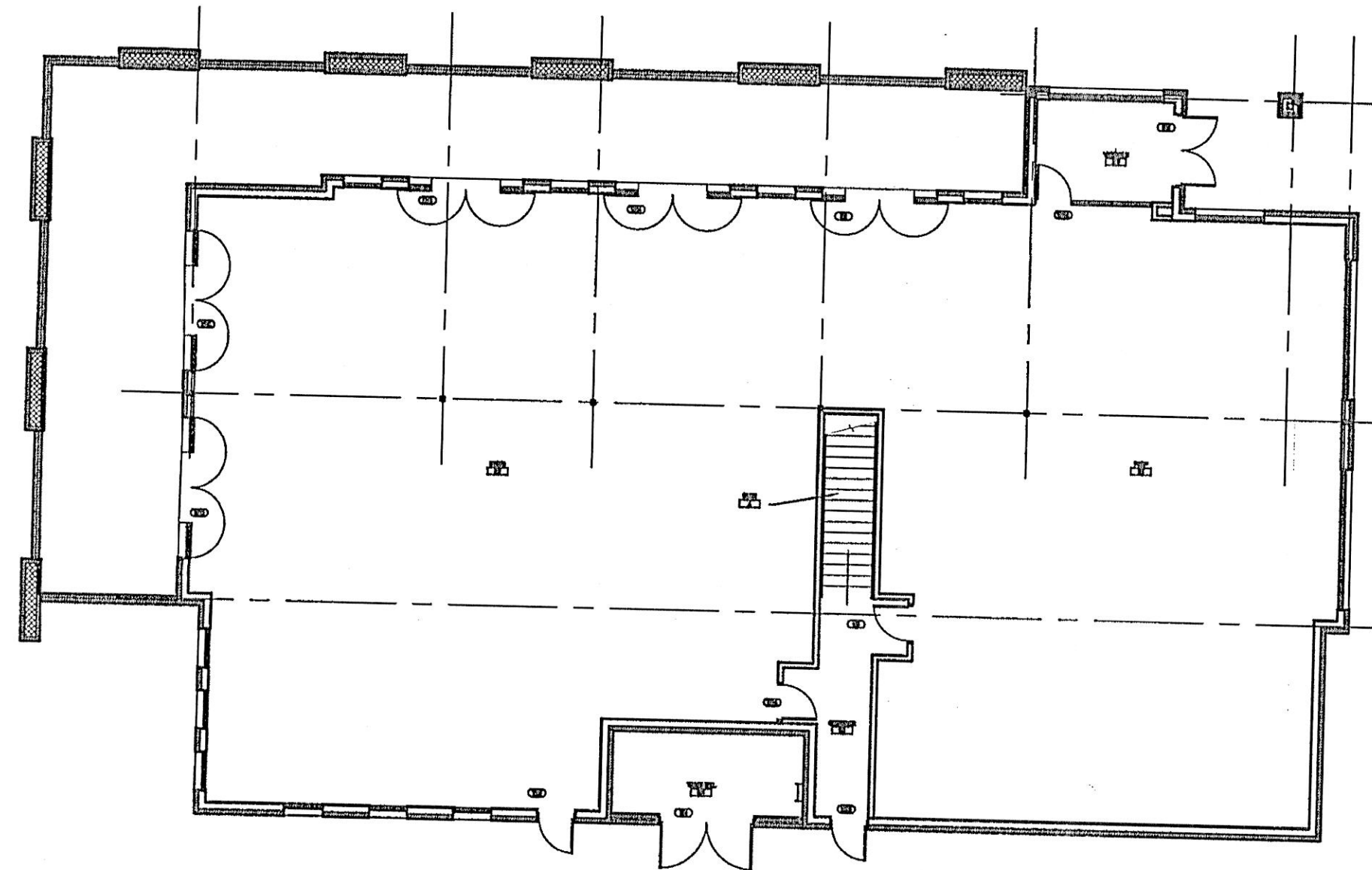


1 BASEMENT FLOOR PLAN
A0.1 NOT TO SCALE



2 GROUND FLOOR PLAN
A0.1 NOT TO SCALE

APPLICABLE CODES:

2000 INTERNATIONAL BUILDING CODE W/ CRYSTAL LAKE AMENDMENTS
1999 NATIONAL ELECTRICAL CODE W/ CRYSTAL LAKE AMENDMENTS
2000 INTERNATIONAL MECHANICAL CODE
1998 ILLINOIS STATE PLUMBING CODE W/ CRYSTAL LAKE AMENDMENTS
1996 NFPA NATIONAL FIRE CODE
2000 INTERNATIONAL ENERGY CONSERVATION CODE
1994 NFPA 101 LIFE SAFETY CODE
AMERICANS WITH DISABILITIES ACT OF 1991 (ADA)
ILLINOIS ACCESSIBILITY CODE 1997

CHAPTER 3 - USE AND OCCUPANCY CLASSIFICATION

AL & JOES DELI SHALL BE ACCORDING TO SECTION 302.3.2 CONSIDERED, NONSEPARATED USE (A-2, RESTAURANT AND S-1 LOW HAZARD MERCANTILE STORAGE). "THE REQUIRED TYPE OF CONSTRUCTION FOR THE BUILDING SHALL BE DETERMINED BY APPLYING THE HEIGHT AND AREA LIMITATIONS FOR EACH OF THE APPLICABLE OCCUPANCIES TO THE ENTIRE BUILDING. THE MOST RESTRICTIVE SHALL APPLY TO THE ENTIRE BUILDING."

CHAPTER 5 - GENERAL BUILDING HEIGHTS AND AREAS

NOTE: THE EXTENT OF THIS PROJECT IS A 1 STORY BUILDING WITH PARTIAL BASEMENT CONSTRUCTED W/ WOOD STUD & MASONRY EXTERIOR WALLS. THEREFORE THE CONSTRUCTION CLASSIFICATION FOR THE BUILDING IS TYPE V-B.

TABLE 503 'ALLOWABLE HEIGHT AND BUILDING AREA'
OCCUPANCY GROUP A-2: HEIGHT LIMITATION OF 40'-0" AND 1 STORY ABOVE THE GRADE PLANE
AREA LIMITATIONS OF 8,000 SF PER STORY.

OCCUPANCY GROUP S-1: HEIGHT LIMITATION OF 40'-0" AND 1 STORY ABOVE THE GRADE PLANE
AREA LIMITATIONS OF 9,000 SF PER STORY.

ACTUAL BUILDING: 26'-0" HIGH
ONE STORY W/ BASEMENT
6,915 SF

506.3 'AUTOMATIC SPRINKLER SYSTEM INCREASE:'

WHERE A BUILDING IS EQUIPPED THROUGHOUT WITH AN AUTOMATIC SPRINKLER SYSTEM ... THE AREA LIMITATION IN TABLE 503 IS PERMITTED TO BE INCREASED BY 300 PERCENT."

THIS BUILDING MEETS THE REQUIREMENTS OF ALLOWABLE AREA BUILDING PER SECTION 503.

CHAPTER 6 - TYPES OF CONSTRUCTION

SECTION 602.5 'TYPE V'
TYPE 'V' CONSTRUCTION IS THAT TYPE OF CONSTRUCTION IN WHICH THE STRUCTURAL ELEMENTS, EXTERIOR WALLS, AND INTERIOR WALLS ARE OF ANY MATERIAL PERMITTED BY THIS CODE.

BUILDING ELEMENTS	INCLUDING COLUMNS, GIRDERS, TRUSSES	0 HOUR
STRUCTURAL FRAME		
BEARING WALLS	EXTERIOR	0 HOUR
	INTERIOR	0 HOUR
NONBEARING WALLS	EXTERIOR (TABLE 602)	0 HOUR
	INTERIOR	0 HOUR
FLOOR CONSTRUCTION	INCLUDING SUPPORTING BEAMS AND JOIST	0 HOUR
ROOF CONSTRUCTION	INCLUDING SUPPORTING BEAMS AND JOIST	0 HOUR

THIS BUILDING IS CLASSIFIED TYPE V-B

CHAPTER 9 - FIRE PROTECTION SYSTEMS

THIS BUILDING IS FULLY SPRINKLERED IN ACCORDANCE WITH SECTION 903

CHAPTER 10 - MEANS OF EGRESS

TABLE 1003.2.2.2. 'MAXIMUM FLOOR AREA ALLOWANCES PER OCCUPANT'

ACCESSORY STORAGE/MECH. = 2,376 GROSS SF
5,038 GROSS SF (1 OCCUPANT / 300 GROSS) = 8 OCCUPANTS

RESTAURANT DINING AREA = 2,020 NET SF
2,020 GROSS SF (1 OCCUPANT / 15 NET) = 135 OCCUPANTS

OUTDOOR DINING AREA = 1,211 NET SF
1,211 GROSS SF (1 OCCUPANT / 15 NET) = 80 OCCUPANTS

KITCHEN AND SERVICE AREA = 3,500 GROSS SF
3,500 GROSS SF (1 OCCUPANT / 200 GROSS) = 18 OCCUPANTS

1005.1. 'EGRESS WIDTH' - TABLE 1003.2.3 'EGRESS WIDTH PER OCCUPANT SERVED'
RESTAURANT, A-2 W/ SPRINKLER
STAIRWAYS = 2" / OCCUPANT
OTHER COMPONENT = .15" / OCCUPANT

CALCULATION:

FIRST FLOOR OTHER COMPONENT = 233(15) = 34.95" (108" PROVIDED)

BASEMENT STAIRWAY = 8(2) = 1.6" (34" PROVIDED)

1004 'EXIT ACCESS TRAVEL DISTANCE' EXITS SHALL BE SO LOCATED THAT THE MAXIMUM LENGTH OF EXIT ACCESS TRAVEL, MEASURED FROM THE MOST REMOTE POINT TO THE ENTRANCE TO AN EXIT ALONG THE NATURAL AND UNOBSTRUCTED PATH OF EGRESS TRAVEL SHALL NOT EXCEED THE DISTANCES GIVEN IN TABLE 1004.2.4.

TABLE 1004.1 'EXIT ACCESS TRAVEL DISTANCE'
ASSEMBLY, A = 250 FEET OF EXIT DISTANCE WITH A SPRINKLER SYSTEM.

BASIS OF DESIGN SPECIFICATIONS

THE FOLLOWING MATERIAL AND PRODUCT SPECIFICATIONS ARE PROVIDED AS A DESIGN INTENT. EQUAL PRODUCTS OR MATERIALS MAY BE CONSIDERED FOR APPROVAL BY THE ARCHITECT AND THE OWNER.

DIVISION 3 - CONCRETE:

ARCH. PRECAST
STONECAST, OR EQUAL FINISH TO MATCH COLOR & TEXTURE OF INDIANA LIMESTONE

DIVISION 4 - MASONRY:

FACE BRICK
BRICKCRAFT, OLD VINCENTS STANDARD FACE BRICK
STONE BASE
CITADEL BUILDING STONE, BLEND OF CHARCOAL/DUSTY ROSE, TRADITIONAL GREY, & DESERT BROWN
STONE
INDIANA LIMESTONE

DIVISION 7 - THERMAL AND MOISTURE PROTECTION:

VENTED ALUM. SOFFIT
QUALITY EDGE - TRJ VENT, PREFINISHED HIDDEN VENT SOFFIT. COLOR: DESERT TAN, 311

DIVISION 8 - DOORS AND WINDOWS:

ALUMINUM FRAMING
KALNEER 4511, COLOR: CHAMPAGNE FINISH
GLAZING
1" INSULATED, GRAY TINTED GLASS

DIVISION 14 - CONVEYING SYSTEMS:

DUMPTRAILER
INCLINATOR COMPANY OF AMERICA - MODEL DU-100 W/ 2 LANDINGS AND 200 LB CAPACITY.

DIVISION 26 - ELECTRICAL:

PATIO LIGHT POLE
ARCHITECTURAL LANDSCAPE LIGHTING - (2) AA-06 LUMINAIRES, CA-20 BRACKET, AND 8' POLE.

REVISIONS:
12/25/07 - CITY COMMENTS
12/21/07 - CITY COMMENTS
02/21/08 - CITY COMMENTS

AL & JOES DELI
Congress Station, Crystal Lake, Illinois
CODE SUMMARY AND PRODUCT SPECIFICATIONS

PARTNERS IN DESIGN
ARCHITECTS

PROJECT NO.: 479.06.025
DRAWN BY: J.J.H. CHECKED BY: W.H.B.
DATE: 03.07.07
SHEET NO.:

A0.1